

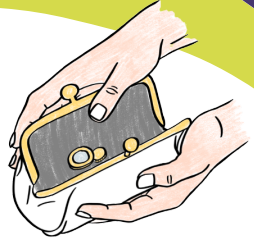


National Traveller

**mabs**

Money Advice & Budgeting Service

# Budget 2024 Social Welfare



## Once-off payments to be paid in winter 2023

- €300 to people getting Fuel Allowance (November 2023)
- €400 to people getting the Working Family Payment (November 2023)
- Double payment of Child Benefit for each child (December 2023)
- €100 to people who get an increase for a qualified child (one payment per qualified child)
- €200 to people getting the Living Alone Increase
- €400 to people getting Disability Allowance, Invalidity Pension, Blind Pension, Carer's Support Grant and Domiciliary Care Allowance in November 2023, (you will get one payment only, even if you qualify for more than one of these payments or you are caring for more than one person).

## Christmas Bonus

A 100% Christmas Bonus will be paid in early December 2023.



## Social welfare weekly payments

From January 2024 the maximum rate of all weekly social welfare payments will increase by €12 with proportional increases for qualified adults and people on reduced rates of payment.

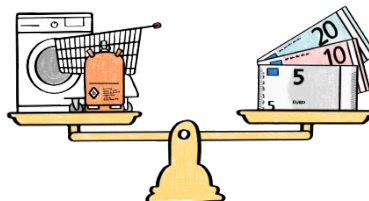
The weekly rate for a qualified child will increase by €4.

A once-off double week for all weekly qualifying social welfare payments will be paid in January 2024.

## Child Benefit

A once-off double payment of Child Benefit will be paid in December 2023.

Child Benefit will be extended to children aged 18 who are in full-time education from September 2024.



If you are concerned about money matters then contact MABS for free, independent and confidential advice on 081807200 or visit [www.mabs.ie](http://www.mabs.ie)



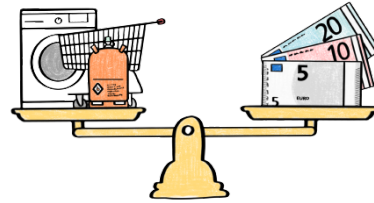


National Traveller

**mabs**

Money Advice & Budgeting Service

# Budget 2024 Social Welfare



## Working Family Payment

The Working Family Payment income limits will increase by €54 across all family sizes from January 2024. A once-off payment of €400 will be paid to people getting the Working Family Payment in November 2023.

## Parent's Benefit

Parent's Benefit will increase from 7 weeks to 9 weeks from August 2024.

## Carer's Allowance

The Carer's Allowance income disregard will increase to €450 for a single person and €900 for a couple from June 2024.

## Domiciliary Care Allowance

Domiciliary Care Allowance will increase by €10 from January 2024.

## Employment programmes

People on Community Employment (CE), Tús, Rural Social Scheme or the Work Placement Experience Programme will get an increase of €12 per week from January 2024.

## Free Travel Scheme

From July 2024, the Free Travel Scheme will be extended to people who are medically certified unfit to drive.

## Employer and employee PRSI rates

All PRSI contribution rates will increase by 0.1% from 1 October 2024.

## New Pay-Related Benefit Scheme

The Government has proposed a new Pay-Related Benefit Scheme for jobseekers which is expected to be introduced in December 2024. Under the scheme, a person will get a jobseeker's payment rate linked to their previous employment income.

**If you are concerned about money matters then contact MABS for free, independent and confidential advice on 081807200 or visit [www.mabs.ie](http://www.mabs.ie)**